

# The Advanced Dental Admission Test (ADAT)

Program Update for 2019

Matt Grady, Ph.D.

Nicholas Hussong, M.A.

Department of Testing Services

American Dental Association

ADEA Annual Session

March 16, 2019

Chicago, IL

# ADAT Overview

- The ADAT has now begun its fourth year (2016-2019)
- The purpose of the ADAT is to provide advanced dental education programs with insight into applicants' potential for success in their program
- The ADAT is overseen by the ADA's Council on Dental Education and Licensure (CDEL)



## Advanced Dental Admission Test (ADAT) 2019 Candidate Guide



**ADA** American Dental Association®  
America's leading advocate for oral health

211 East Chicago Avenue  
Chicago, Illinois 60611-2637  
800.232.1694  
ADA.org

©2019 American Dental Association. All rights reserved.

# Administration and Fees

- 2019 ADAT administration window
  - March 1 - August 31 (6 months)
- 2019 Fees
  - Examination fee: \$380
  - Additional ADAT score reports: \$40
  - Non-accredited processing fee: \$210
- Retesting policy
  - Examinees may test two times per calendar year
  - Attempts must be separated by a minimum of 45 days
  - After two attempts, examinees must provide proof they are actively applying to advanced dental education programs

# Score Reporting

- ADAT results are distributed through ADEA PASS and through the Department of Testing Services (DTS) Hub
  - The DTS Hub is an online score reporting portal developed by the ADA
- Official ADAT results are made available 3 to 4 weeks after an examinee tests
  - e.g., If an examinee tested on May 1, his or her official results were released by June 1
  - Candidates and programs no longer need to wait until September to receive official results

# ADAT Content Specifications

## Biomedical Sciences (80 items)

Anatomic Sciences

Biochemistry-Physiology

Microbiology-Pathology

Dental Anatomy-Occlusion

## Data, Research Interpretation, and Evidence Based Dentistry (40 items)

Study Design

Data Analysis

Result Interpretation

Inference and Implication

## Clinical Sciences (80 items)

Endodontics

Operative Dentistry

Oral and Maxillofacial Surgery / Pain Control

Oral Diagnosis

Orthodontics / Pediatric Dentistry

Periodontics

Pharmacology

Prosthodontics

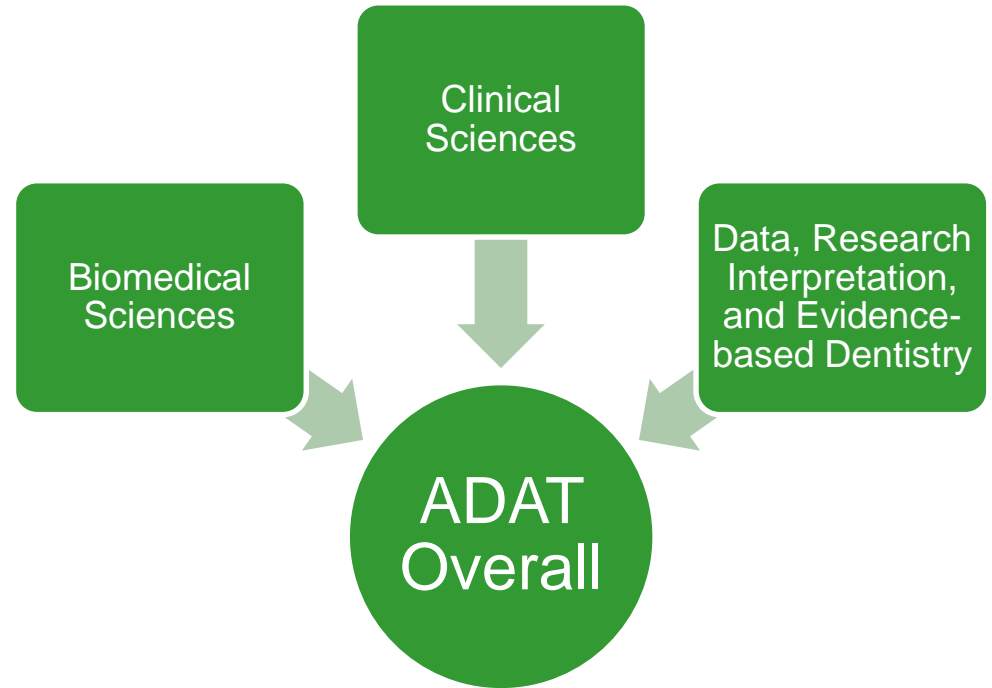
Principles of Ethics

Patient Management

Case-based items

# ADAT Scoring

- ADAT examinees receive four scores
- The *ADAT Overall* score measures critical thinking in dentistry, and is a weighted average of the three discipline-based scores
- Scores can range from 200 to 800 (reported in 10 point increments)
- Few examinees score below 300 or above 700



# ADAT Utilization

- Programs make their own decisions about how to use ADAT results
- Some programs factor ADAT results into admission decisions, whenever they are available
  - “If ADAT result is there I will look at it”
- Some programs use ADAT results only in certain prescribed situations
  - “I will use this information if it helps to qualify candidates”
  - “Would use testing where applicants do not have class ranks or grade point averages.”
- Some programs use ADAT results to inform other admissions procedures
- Some programs are collecting ADAT results, but are not yet using them to inform individual admission decisions
  - “Are there any outcomes studies on this yet?”

# ADAT Utilization (2019)

- The ADA distributes a survey to advanced education programs each year to understand how they anticipate using ADAT results
  - About 60% of programs respond to the survey
  - Information on participation by specific programs appears on the ADAT website ([ada.org/adat](http://ada.org/adat))
- In 2019, most programs (approximately two thirds) indicated they accepted or required the ADAT
- Among specialty areas, the top four areas requiring ADAT results are as follows:
  - Endodontics
  - Orthodontics
  - Prosthodontics
  - Pediatric Dentistry
- DTS thanks those programs who have championed the ADAT and require its usage. This really helps the success of this examination program!



# Feedback from Programs (2019)

- DTS has received valuable positive feedback on the ADAT from several advanced dental education programs:

“I think this a good measure of [applicants’] knowledge, as more Dental programs are moving to a P/F grading system. However, I do need more information.”

“It would help the admission process”

“I would like to see more programs utilize”

“Would use testing where applicants do not have class ranks or grade point averages.”

“I would love to have the ADAT mandatory if all programs require the test.”

“Wish all programs were using it”

“It's unfortunate that many dental schools have advised their students to not take the ADAT. My preference would be to require the ADAT for my residency application, but there simply are not enough candidates who take the exam to do so. Especially for dental schools who do not rank their students or provide a GPA, our program uses the ADAT score as an important objective measure [of] the student's academic standing.”

“We hesitate to make taking the ADAT a requirement because we feel we may lose some good qualified candidates who decide not to take the ADAT. We do like the idea of having standardized tests scores to review to help us get a better idea of each candidate's level of knowledge.”

# ADAT Communication

- Additional information about the ADAT is available on the ADAT website [www.ada.org/adat](http://www.ada.org/adat)
  - Examination Guide
  - User's Guide
  - Practice Test
  - FAQs
  - Past presentations
  - Program tracker
  - Test specifications
  - Volunteer Test Constructor application

ADA WEBSITES

Search this Site

ADA American Dental Association®  
America's leading advocate for oral health

MEMBER CENTER EDUCATION/CAREERS SCIENCE/RESEARCH ADVOCACY PUBLICATIONS PUBLIC PROGRAMS

Home > Education and Careers > Advanced Dental Admission Test

Advanced Dental Admission Test

DENTPIN

ADAT Guide

Apply to Take the ADAT

Test Preparation and Use

Take the ADAT at Pearson VUE

My Account

Score and Audit Information

Presentations and News

ADAT Program Use of Personal Information

Test Security

Accepted by: over 300 programs

Offered at: Pearson VUE Test Centers in U.S. and Canada

Test time: 4 hours and 30 minutes

2018 Testing Window: open thru 8/31

Topics include: Biomedical Sciences, Data, Research Interpretation and Evidence-Based Dentistry

Apply for a Partial Fee Waiver before you apply to test: [Partial Fee Waiver Form](#)

The Advanced Dental Admission Test (ADAT) is an admission test designed to provide advanced dental education programs with a means to assess applicants' potential for success. Third- and fourth-year dental students and practicing dentists interested in post-graduate training (e.g., in a dental specialty area), and international dental students applying to advanced dental education programs or advanced standing in pre-doctoral programs, are encouraged to apply to take the ADAT. **The 2018 ADAT application is now open.** Please select the highlights below for more information about the ADAT.

# Score Interpretation

- The [ADAT User's Guide](#) provides information that helps users interpret ADAT scores
- The User's Guide contains:
  - Information about ADAT content
  - The percentiles associated with different ADAT scores
  - Descriptive statistics for ADAT scores overall and by specialty
- *What is a “good” ADAT score?*



Using the Advanced Dental Admission Test (ADAT) for Admission Purposes: **A Guide for Advanced Dental Education Programs**



**ADA** American Dental Association®  
America's leading advocate for oral health  
211 East Chicago Avenue  
Chicago, Illinois 60611-2637  
800.232.1694  
ADA.org

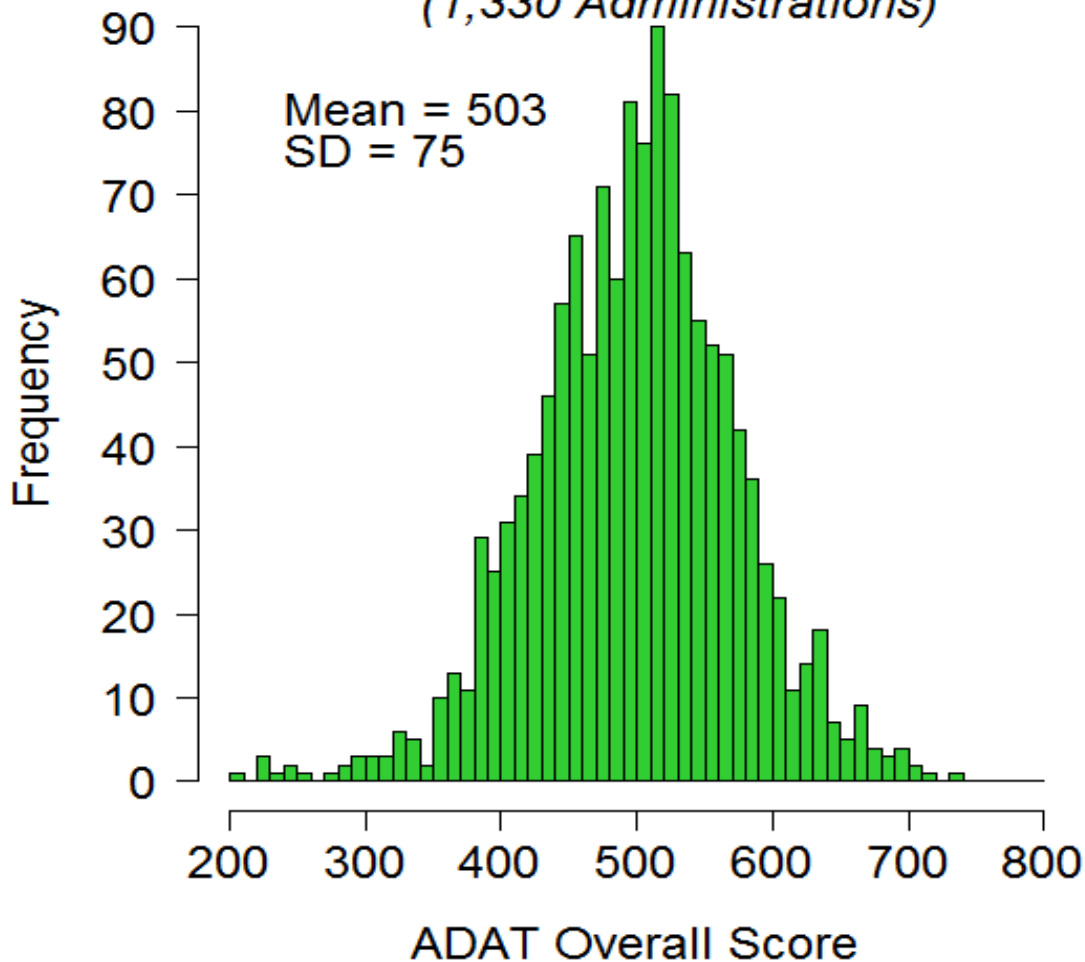
©2016 American Dental Association. All rights reserved.

# ADAT Overall

## ADAT Overall

- An *ADAT Overall* score of 600 corresponds to the 92<sup>nd</sup> percentile
- An *ADAT Overall* score of 650 corresponds to the 98<sup>th</sup> percentile

*ADAT Overall Scores: 2016-2018  
(1,330 Administrations)*

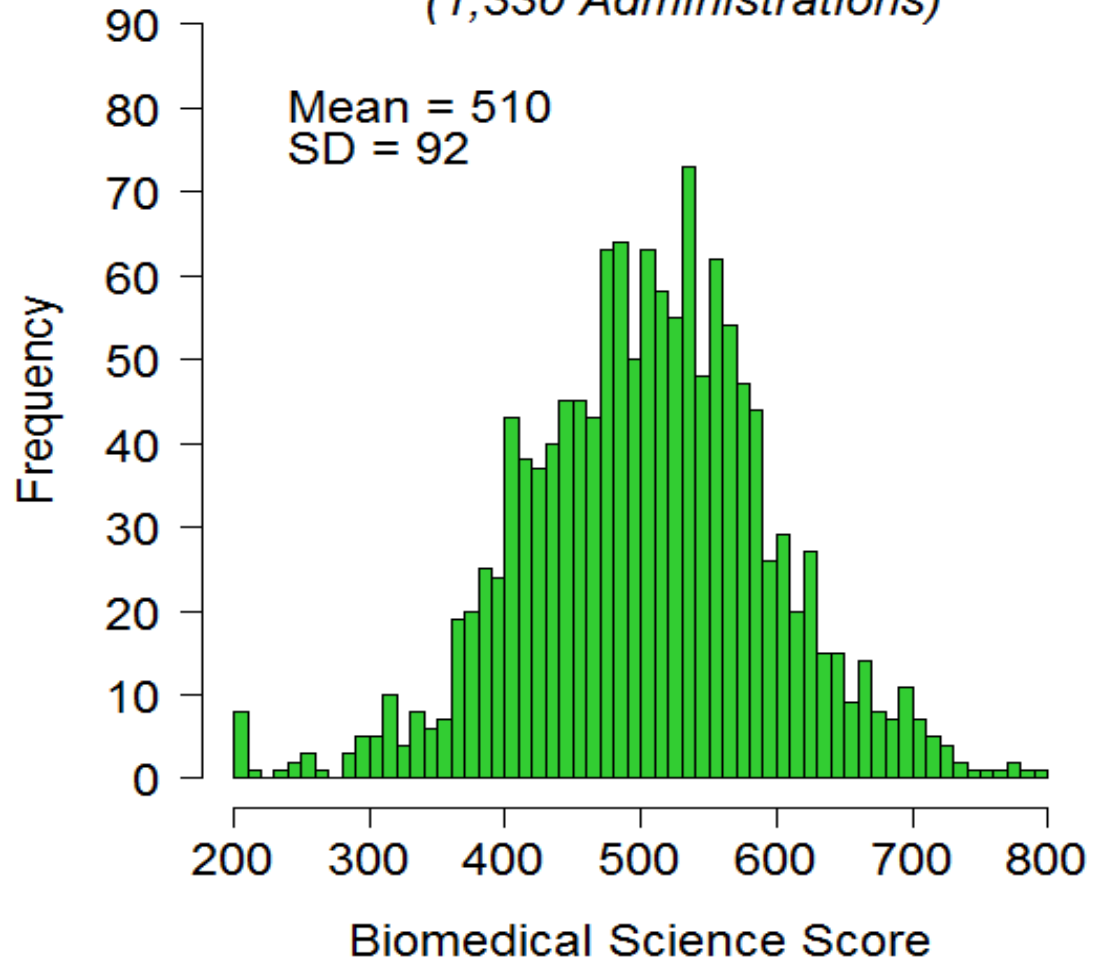


# Biomedical Science

## Biomedical Science

- A *Biomedical Science* score of 600 corresponds to the 86<sup>th</sup> percentile
- A *Biomedical Science* score of 650 corresponds to the 94<sup>th</sup> percentile
- A *Biomedical Science* score of 700 corresponds to the 98<sup>th</sup> percentile

*Biomedical Science Scores: 2016-2018  
(1,330 Administrations)*

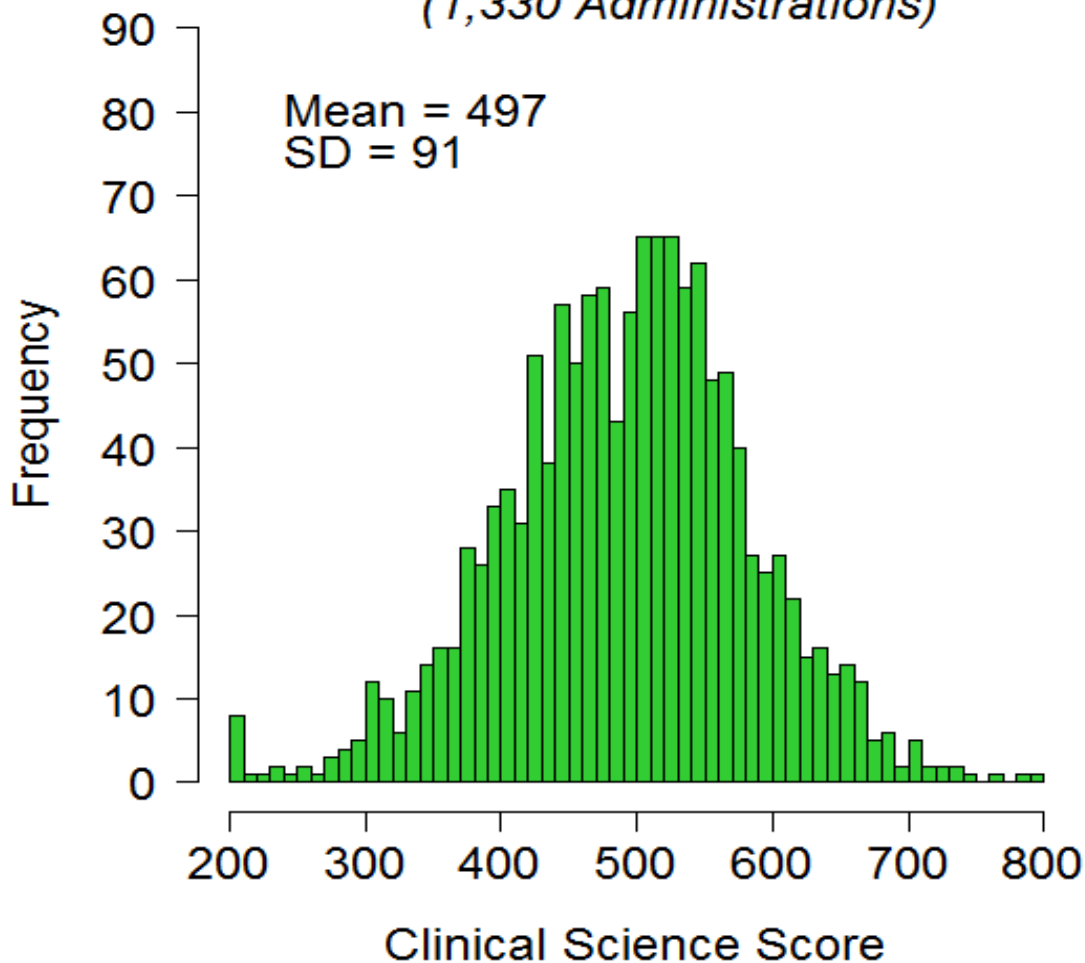


# Clinical Science

## Clinical Science

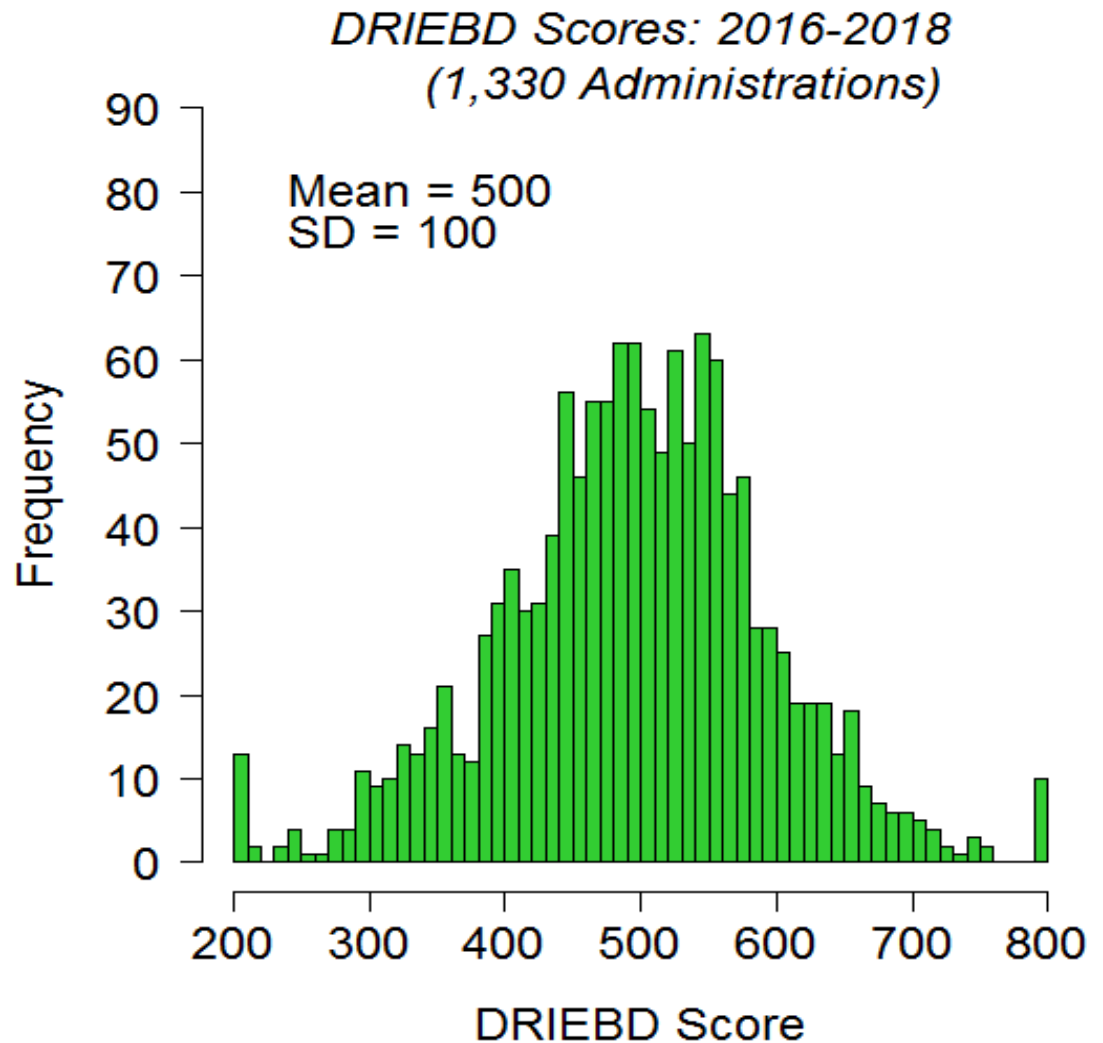
- A *Clinical Science* score of 600 corresponds to the 89<sup>th</sup> percentile
- A *Clinical Science* score of 650 corresponds to the 96<sup>th</sup> percentile
- A *Clinical Science* score of 700 corresponds to the 99<sup>th</sup> percentile

*Clinical Science Scores: 2016-2018  
(1,330 Administrations)*



## DRIEBD

- A *DRIEBD* score of 600 corresponds to the 87<sup>th</sup> percentile
- A *DRIEBD* score of 650 corresponds to the 95<sup>th</sup> percentile
- A *DRIEBD* score of 700 corresponds to the 98<sup>th</sup> percentile



# Reliability

- ADAT scores demonstrate high reliability
- Reliability coefficients above .90 are generally considered excellent; DTS targeted .70 or higher for the three discipline scores
- The *ADAT Overall* score is the most reliable because it is based on the examinee's performance on the entire test
- The distributions appearing on prior slides show the ADAT is capable of discriminating among candidates across the dental skills continuum

*Reliability coefficient, by ADAT scale: 2017-2018*

ADAT Scale	2017	2018
ADAT Overall	.91	.91
Biomedical Science	.78	.78
Clinical Science	.74	.79
DRIEBD	.79	.80



# Validity Evidence

- There is a positive relationship between ADAT performance and self-reported dental school GPA
  - i.e., Examinees with higher GPAs tend to perform better on the ADAT

*Average ADAT score, by self-reported dental school GPA: 2016-2018*

Dental School GPA	# of Examinees	ADAT Overall	BIO	CLI	DRI
1.0 to 2.5	25	416	454	389	391
2.6 to 3.0	98	452	456	449	445
3.1 to 3.5	426	487	491	484	484
3.6 to 4.0	554	523	533	516	516
Pass/Fail Grading	159	530	529	520	549

# Validity Evidence

- The ADAT is administered under controlled, standardized testing conditions
- ADAT items are written by subject matter experts who are trained in item writing
- The disciplines covered on ADAT are based on findings from a survey on advanced dental education conducted by an ADA Task Force and ADEA
- The test specifications for the Clinical Sciences section of the ADAT are based on the practice analysis that supports the National Board Dental Examination (NBDE) Part II
- The test specifications for the Biomedical Science section of the ADAT are modeled after the NBDE Part I
- The ADA's Council on Dental Education and Licensure (CDEL) reviews and approves the test specifications and Test Constructors provide additional input

# Concluding Thoughts

- The ADA pursued ADAT development based on requests from advanced dental education programs for a valid and reliable quantitative indicator of candidate likelihood of success in advanced dental education programs
- The ADAT has demonstrated strong psychometric performance and over 1,000 administrations have occurred to date.
- The water is fine, jump in!
- The ADA invites programs to consider making the ADAT a requirement.

# Questions?



# Thank You